



ALITA LINEAR COMPRESSORS and VACUUM PUMPS

General Catalog



ALITA INDUSTRIES, INC.
亞立達工業股份有限公司

ALITA® Linear Compressor and Vacuum Pump

Alita Industries is a dynamic manufacturing company offering a complete line of linear pumps for a diverse range of applications. The ALITA® pumps are designed for long life, continuous and ultra quiet operation with minimal maintenance requirement.

Today, our customer ranges from small/medium businesses, OEM integrating firms, through large corporations spanning the globe in variety of industries. Our reputation for quality is established through excellence in engineering, manufacturing as well as commitment to outstanding customer service.

At Alita Industries, we back the best quality pumps in the industry with continuous advances in our core capabilities and uncompromising drive for product excellence. Original Equipment Manufacturers (OEMs) demand performance, reliability, and a sustainable competitive advantage to enhance the quality and dependability of their finish products. To meet these challenges, we have committed to constantly increase our knowledge and awareness of application trends and customer preferences. This commitment, combined with our quality products and excellent customer services, means we have the best packages to meet the growing demands of today's and tomorrow's businesses.

Product Features

- Stable continuous airflow
- Ultra quiet operation
- High efficiency
- Low energy consumption
- Low starting and running current
- Low pulsation
- Low vibration
- Oil-free design
- Long service life
- Compact and lightweight
- Simple maintenance
- Thermal protection
- Fail-safe designs
- Reliable intermittent and continuous operations
- UL outdoor rating (standard models)
- CE conformity

Range of Applications

- Aerobic wastewater treatment
- Agricultural and horticultural system
- Air monitor and sampling equipment
- Anti-icing system
- Aquaculture aeration
- Automatic dispenser
- Circulation therapy equipment
- Entertainment system
- Laboratory test equipment
- Liquid agitation and mixing
- Manufacturing machinery
- Medical nebulizer
- OEM pumping system
- Ozone treatment system
- Pneumatic beds
- Pond and aquarium aeration
- Scientific and chemical apparatus

The following pages outline our standard product offering. If your requirements dictate a custom solution, we'll be glad to help.



ALITA® standard linear air pumps conform to the European Community's Machinery Directive (CE) and Underwriters Laboratories (UL) certified in compliance to USA and Canada safety standards for household, commercial, and industrial air compressors and vacuum pumps.

Standard Pump Series



Model
AL-6A
AL-15A
AL-20A

Pressure Only

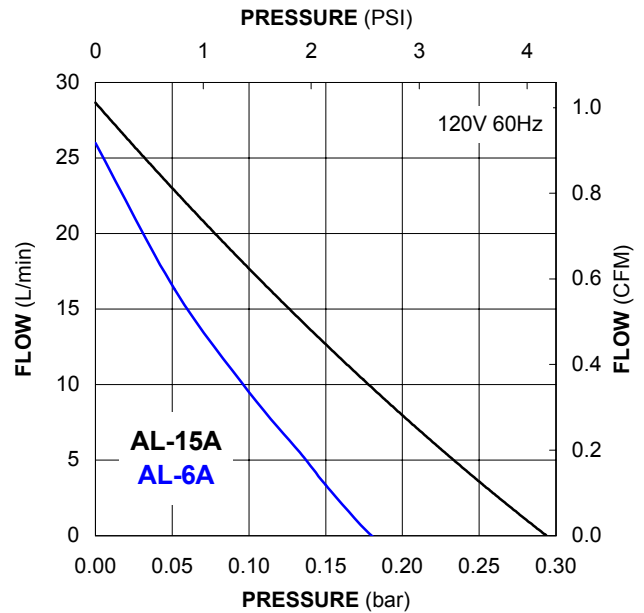


Model
AL-6SA
AL-15SA
AL-20SA

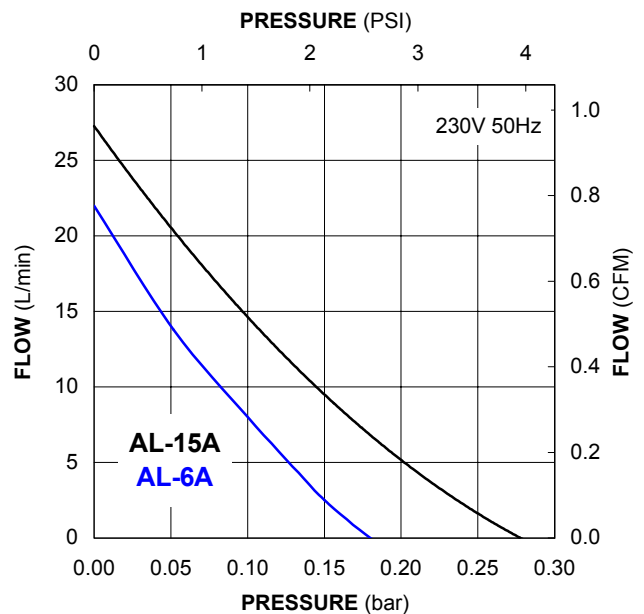
Pressure
and Vacuum



ALITA® standard linear air pumps conform to the European Community's Machinery Directive (CE) and Underwriters Laboratories (UL) certified in compliance to USA and Canada safety standards for household, commercial, and industrial air compressors and vacuum pumps.



PERFORMANCE CURVES



SPECIFICATION

Model	AL-6A / 6SA				AL-15A / 15SA		AL-20A / 20SA	
	120V 60Hz	230V 50Hz	24V 60Hz	24V 50Hz	120V 60Hz	230V 50Hz	120V 60Hz	230V 50Hz
Rated Pressure	0.1 bar (1.4 psig)		0.1 bar (1.4 psig)		0.1 bar (1.4 psig)		0.1 bar (1.4 psig)	
Rated Performance	10 lpm	8 lpm	10 lpm	8 lpm	17.5 lpm	15 lpm	20 lpm	17 lpm
Rated Current Draw	0.1 A	0.1 A	0.7 A	0.8 A	0.2 A	0.2 A	0.3 A	0.2 A
Rated Input Power	7 W	7 W	-	-	14 W	14 W	15 W	16 W
Sound Level	27 dB		27 dB		29 dB		29 dB	
Weight	2.4 kg (5.3 lb)		2.4 kg (5.3 lb)		2.4 kg (5.4 lb)		2.5 kg (5.5 lb)	
Dimension	150 mm L x 130 mm W x 111 mm H							

Information presented is base on test results from nominal units
Specifications are subject to change without notice

Standard Pump Series



Model
AL-30*
AL-40
AL-50*

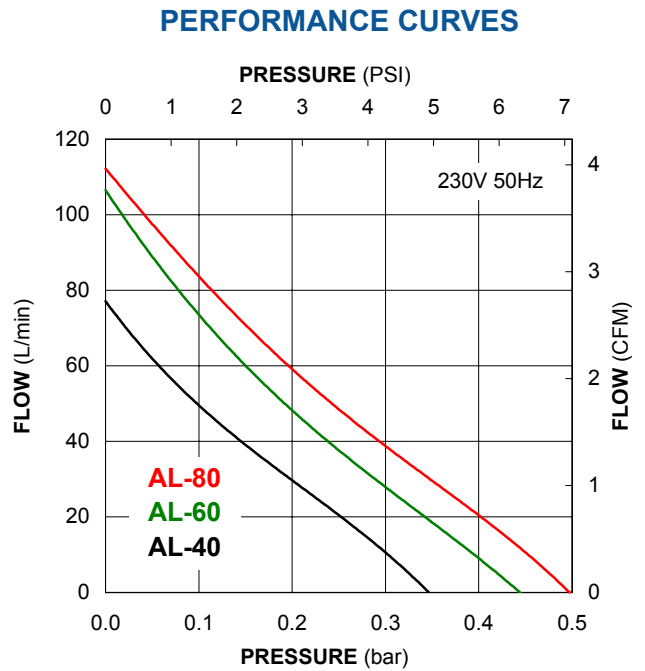
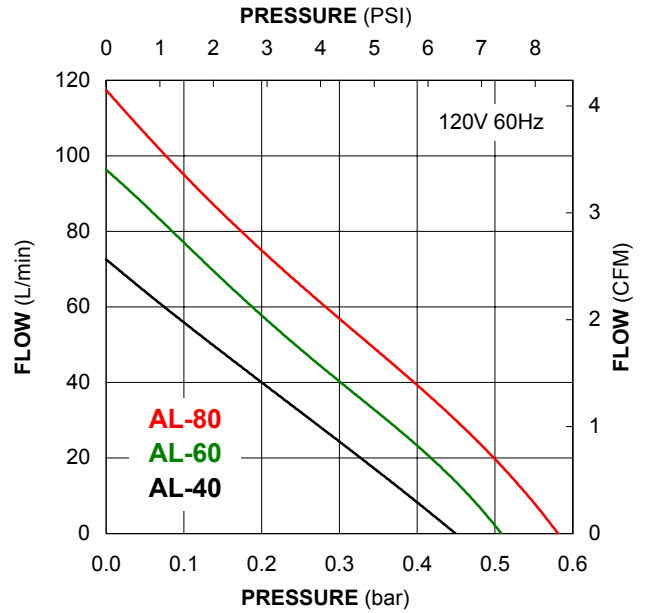


Model
AL-60
AL-80
AL-100C*
AL-120C*

* Custom models: AL-30/50/100C/120C
Contact Alita Industries for details



ALITA® standard linear air pumps conform to the European Community's Machinery Directive (CE) and Underwriters Laboratories (UL) certified in compliance to USA and Canada safety standards for household, commercial, and industrial air compressors and vacuum pumps.



SPECIFICATION

Model	AL40		AL-60		AL-80	
	120V 60Hz	230V 50Hz	120V 60Hz	230V 50Hz	120V 60Hz	230V 50Hz
Rated Pressure	0.15 bar (2.18psig)		0.15 bar (2.18 psig)		0.15 bar (2.18 psig)	
Rated Performance	48 lpm	40 lpm	68 lpm	60 lpm	85 lpm	70 lpm
Rated Current Draw	0.8 A	0.5 A	1.0 A	0.6 A	1.7 A	0.8 A
Rated Input Power	46 W	40 W	60 W	54 W	85 W	80 W
Sound Level	36 dB		38 dB		39 dB	
Weight	5.6 kg (12.5 lb)		6.5 kg (14.4 lb)		6.5 kg (14.4 lb)	
Dimension	205 mm L x 173 mm W x 202 mm H					

Information presented is base on test results from nominal units
Specifications are subject to change without notice

Standard Series - High Capacity Air Pumps



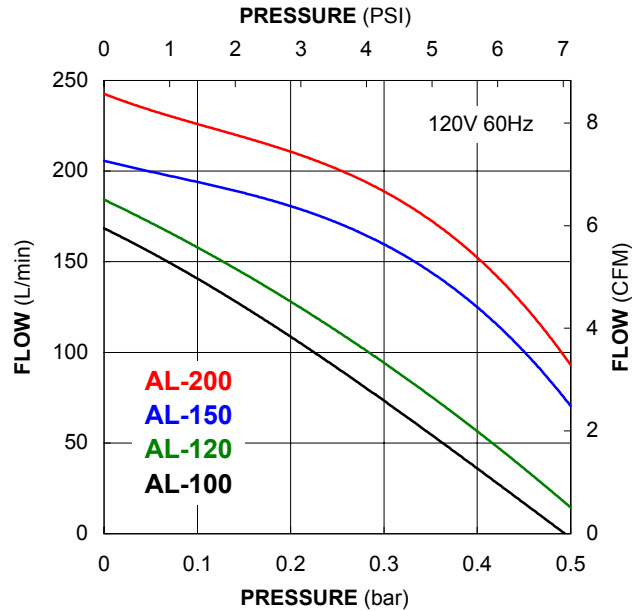
Model
AL-100
AL-120
AL-150
AL-200

Compact high capacity linear air pump with low current draws, low vibration and quiet performance.

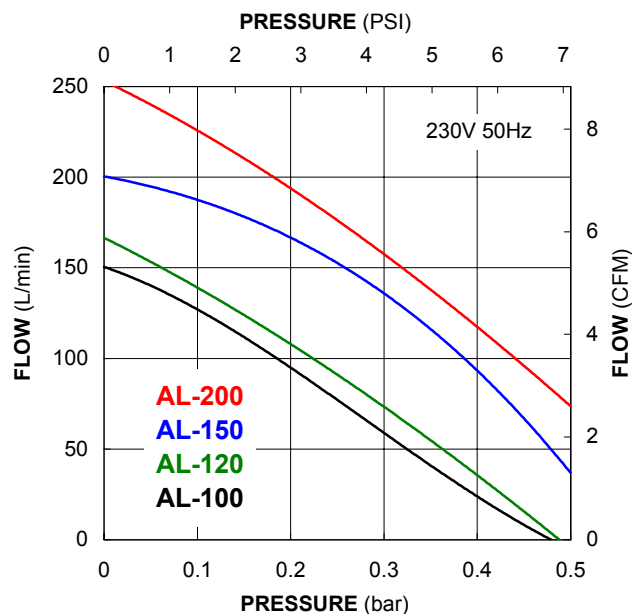
Features:
Automatic thermal protection
Diaphragm failure detection and protection
Fail-safe construction



ALITA® standard linear air pumps conform to the European Community's Machinery Directive (CE) and Underwriters Laboratories (UL) certified in compliance to USA and Canada safety standards for household, commercial, and industrial air compressors and vacuum pumps.



PERFORMANCE CURVES



SPECIFICATION

Model	AL100		AL-120		AL-150		AL-200	
	120V 60Hz	230V 50Hz	120V 60Hz	230V 50Hz	120V 60Hz	230V 50Hz	120V 60Hz	230V 50Hz
Rated Pressure	0.2 bar (2.9 psig)							
Rated Performance	110 lpm	95 lpm	125 lpm	110 lpm	180 lpm	170 lpm	210 lpm	190 lpm
Rated Current Draw	2.1 A	1.0 A	2.2 A	1.1 A	2.3 A	1.2 A	3.2 A	1.3 A
Rated Input Power	126 W	115 W	132 W	126 W	138 W	138 W	250 W	200 W
Sound Level	41 dB		42 dB		44 dB		45 dB	
Weight	8.3 kg (18.2 lb)		8.3 kg (18.2 lb)		10.1 kg (22.3 lb)		10.1 kg (22.3 lb)	
Dimension	248 mm L x 205 mm W x 245 mm H							

Information presented is base on test results from nominal units
 Specifications are subject to change without notice

OEM Component Series

Compressor Type (B)

Model

AL-6B
AL-15B
AL-20B



AL-30B
AL-40B
AL-50B



AL-60B
AL-80B



AL-100B
AL-120B



Compressor & Vacuum Type (SB)

Model

AL-6SB
AL-15SB
AL-20SB



AL-30SB
AL-40SB
AL-50SB



AL-60SB
AL-80SB



AL-100SB
AL-120SB

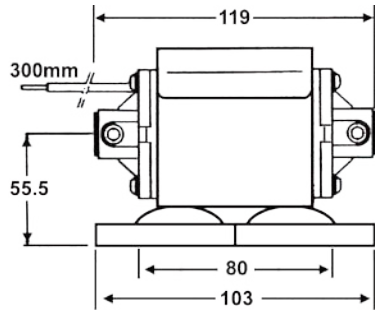


OEM Component Series Dimension

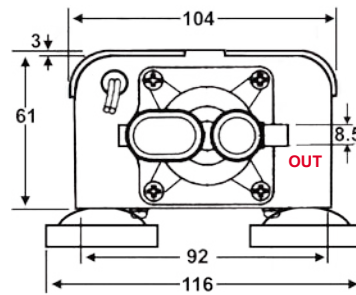
Front View

Side View

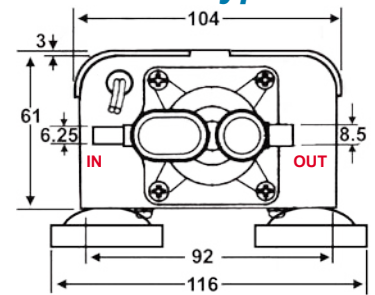
Model AL-6B, AL-15B, AL-20B



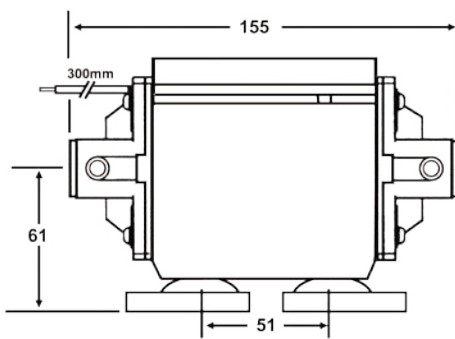
B Type



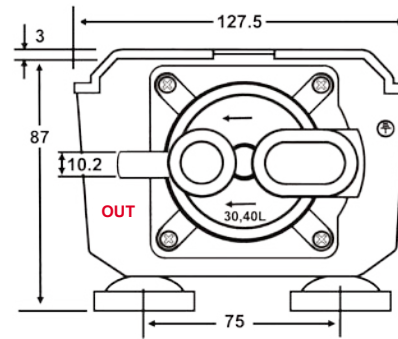
SB Type



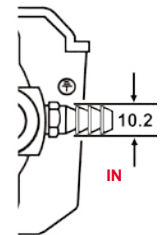
Model AL-30B, AL-40B, AL-50B



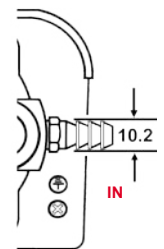
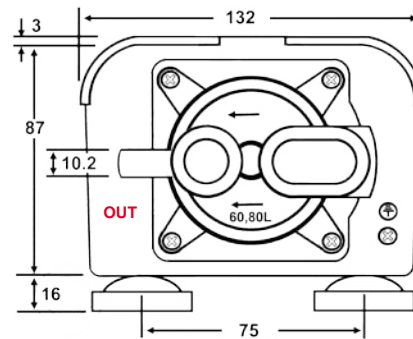
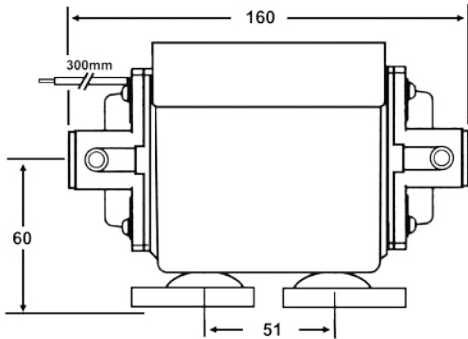
B Type



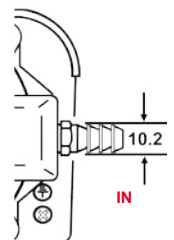
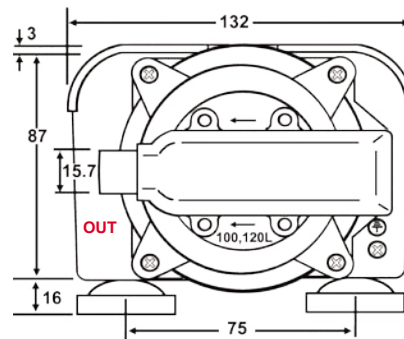
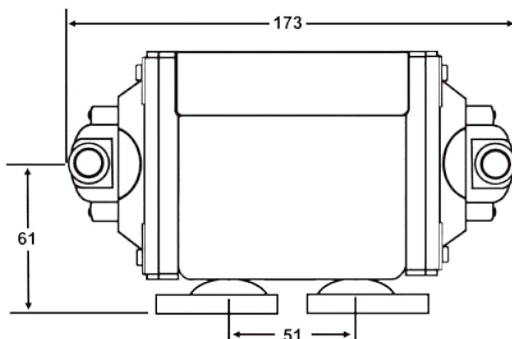
SB Type



Model AL-60B, AL-80B



Model AL-100B, AL-120B

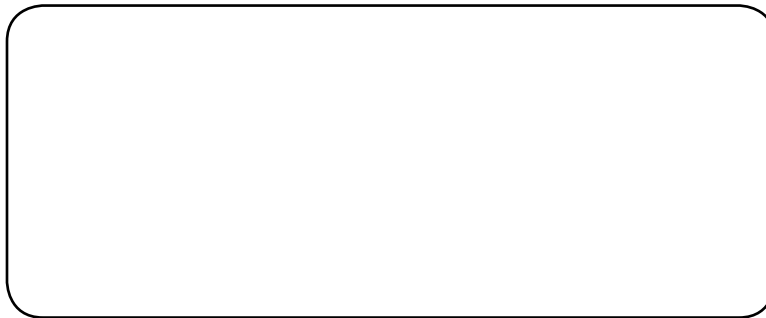


Alternate mounting foot available.

For complete up-to-date product information and specification, please visit our web site at

www.alita.com

Distributed by:



North America

ALITA INDUSTRIES, INC.

P.O. Box 660923
Arcadia, CA 91066-0923, U.S.A.
Tel: +1 (626) 962-2116 / 280-7383
Fax: +1 (626) 962-2177
Internet: www.alita.com

Asia

亞立達工業股份有限公司

ALITA INDUSTRIES, INC.

No. 45, Lane 20, Sec. 1, Wenhwa 2nd Rd.
Linkou Hsiang, Taipei Hsien, TAIWAN, 244, R.O.C.
Tel: +886 (02) 2609-4889
Fax: +886 (02) 2609-4868
Internet: www.alita.com.tw

The information presented in this material is based on test results of nominal units. It is believed to be accurate and is offered as an aid to help in the selection of ALITA products. It is the user's responsibility to determine suitability of the product for intended use and user assumes all risk and liability whatsoever in connection therewith. Environmental and application conditions may affect the advertised life. Alita Industries does not warrant, guarantee or assume any obligation or liability in connection with this information. Pictorial, dimensional data and product specifications are subject to change without notice.